

BAUER GB 80 S

Hydraulic Grab Carrier

Grab System

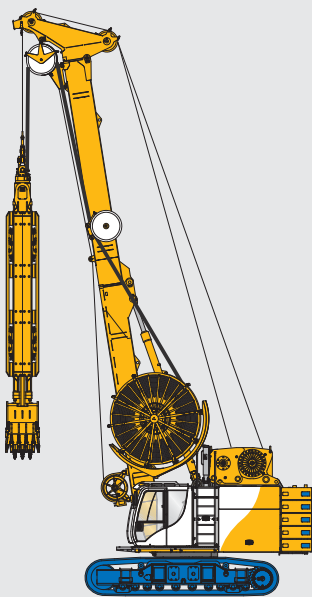


“Digging profits out of your projects”

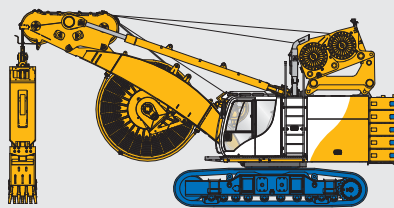
Bauer’s line of GB rigs is a perfect marriage between our proven and tested base machines with our state-of-the-art DHG V grab body. The new generation GB 80 S is our latest offering to help our customers work in the increasingly complex diaphragm wall jobsite conditions around the world.

Bauer’s team of world-class mechanical engineers worked closely with our customers and partners to improve this classic machine, giving you maximum efficiency with minimum complexity. The new GB 80 S has the reliable mechanical, electronic and hydraulic systems that Bauer is known for, operating together in a perfect balance, without any additional bells and whistles to bog down your productivity. The simplified, grab-focused end-result is easy to operate, making it the perfect choice for creating the high-quality diaphragm walls that your customers require. On top of all, service and maintenance are easier than ever, thanks to our brand-new BT 80 base carrier.

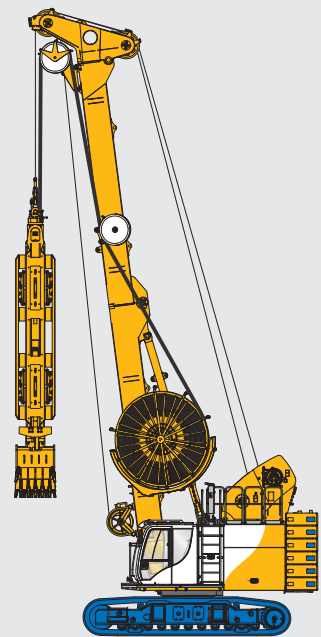
With additional components like the B-tronic control system, and TD4 Turning Device, you will be able to deliver on time, even in challenging soil conditions.



GB 50



GB 50 Low Headroom

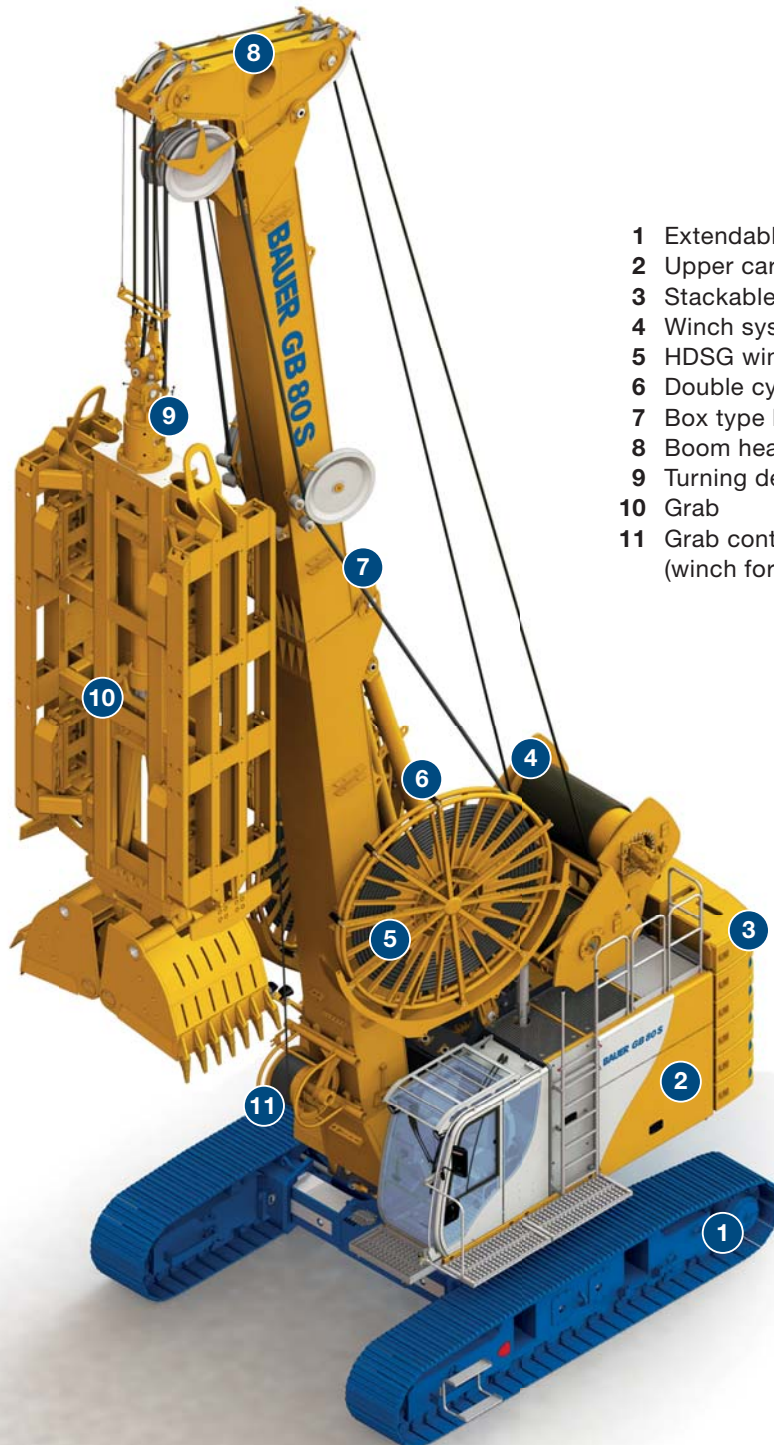


GB 80 S

- New generation base carrier BT 80 with optimized hydraulic system
- Optimized service and maintenance with patented service platform
- First GB with single layer winch for long life time of wire ropes
- Compact swing radius

GB 80 S Hydraulic Grab

Wall thickness:	0.4 – 1.8 m
Wall depth:	80 m
Maximum hoisting force:	550 kN (2 x 275 kN)
Max. hook load (incl. soil filling):	32 t
Weight (without grab):	100 t
Engine:	310 kW (China Stage III – CAT C9.3B) 310 kW (Stage V – CAT C9.3B)



- 1 Extendable undercarriage UW 115 G
- 2 Upper carriage BT 80
- 3 Stackable counterweights
- 4 Winch system
- 5 HDSG winding system
- 6 Double cylinder kinematic system
- 7 Box type boom
- 8 Boom head
- 9 Turning device
- 10 Grab
- 11 Grab control system
(winch for electric cable)

BT 80 Upper carriage

- Integrated service platform for easy and safe maintenance work, which can be carried out from the ground or platform level
- Access ladder to upper structure for HSE compliance
- FOPS compliant, modern cabin with rear-view camera, winch camera, flashing warning light and audible reverse warning system meets all HSE requirements
- Bauer comfort cabin meets highest comfort
- Intelligent layout of instruments and display screens for easy operation and maximum view of grabbing position
- Variably stackable counterweights for HSE compliance
- Decreased swing radius for increased mobility



Undercarriage

- Solid Bauer design for 360° working radius
- Hydraulically extendable tracks
- Large footprint for a stable operation
- High traction forces

High-performance CAT engine

- Conforming to exhaust emission standards: China Stage III (ORA) or Stage V / Tier 4 final
- Low fuel consumption due to optimized design of hydraulic system
- Low noise emission due to clever sound protected installation
- Worldwide CAT-service partner network



Final inspection and test run

- Comprehensive Bauer test program
- Optimal adjustment and calibration of all main functions
- Heat transfer test
- Noise emission measurements
- Electromagnetic compatibility test

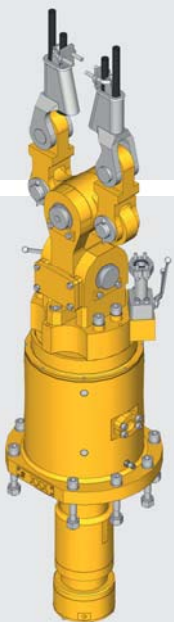
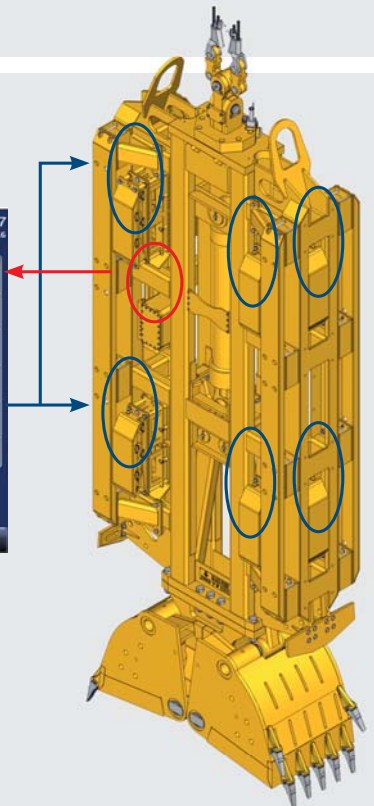


Winch system

- High effective line pull and line speed
- Load classification M6 / L3 / T5 for heavy-duty, continuous operation
- Single layer winch for minimized rope wear
- A special grooving system on the drum and rope pressure roller, reducing wear on the wire rope
- Pinned connection for easy transportation
- Transparent gauge for easy oil check

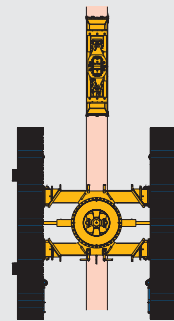
Grab control system

- Online data transfer from grab to the operator's cabin by heavy-duty electrical cable
- Possibility of directly grab adjustments
- Continuous monitoring the verticality of wall trench during excavation
- Collection, processing and visualization of relevant data
- Failure diagnostics and maintenance service
- Electrical cable is automatically reeled off by a hydraulically operated cable recoil system
- B-Tronic System with high resolution 10,4" color screen

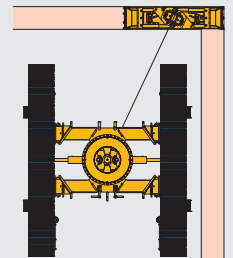


Turning device TD 4

- GB 80 S supports hose guidance for turning device operation on grabs down to minimum trench width of 600 mm
- Easy operation of turning function with control levers of GB
- Increased maneuverability when working on corner panels or in confined areas
- Compensates negative influence of asymmetric teeth arrangement
- Improved productivity in hard soil

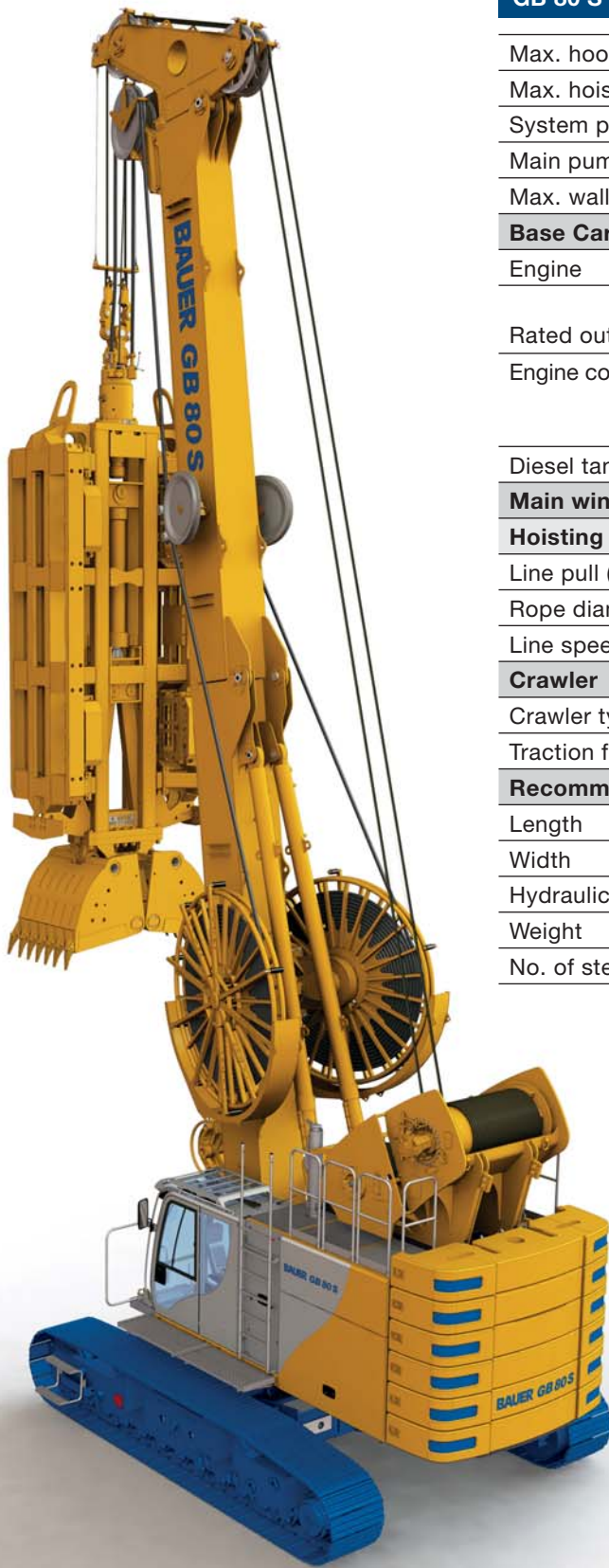


TD 4 in 90°



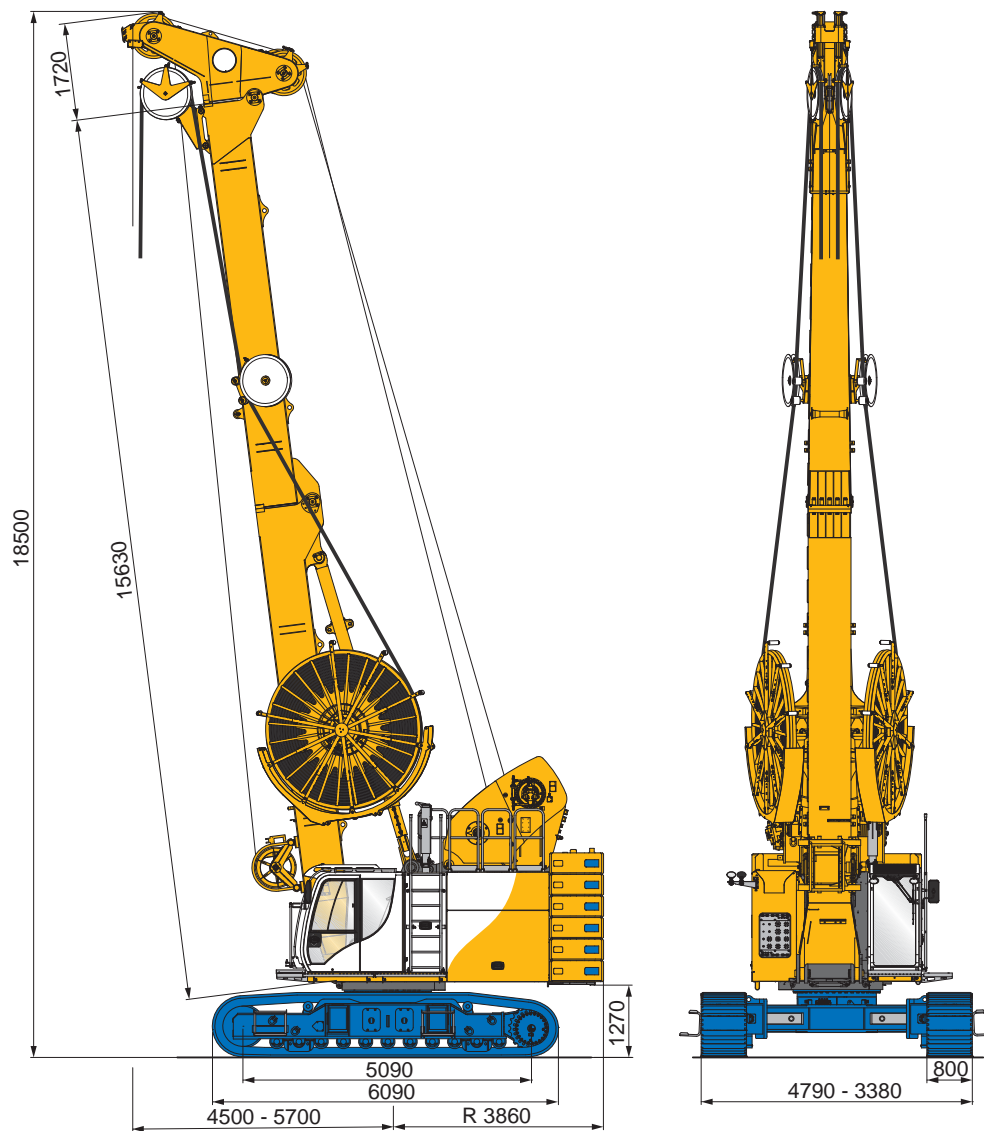
TD 4 in 25°

Technical Specifications



GB 80 S Hydraulic Grab

Max. hook load	32 t	
Max. hoisting force	550 kN	
System pressure	350 bar	
Main pump max. flow	2 x 320 l/min + 120 l/min	
Max. wall depth	80 m	
Base Carrier	BT 80	
Engine	CAT C9.3B	CAT C9.3B
	310 kW @	310 kW @
Rated output ISO 3046-1	1,800 rpm	1,800 rpm
Engine conforms to	EU 2016/1628 EPA/CARB GB20891-2014	ORA Stage V Tier 4 final China Stage III
Diesel tank capacity	600 l	
Main winch - single layer		
Hoisting winch - 2 units	M6 / L3 / T5	
Line pull (1st layer) effective	275 kN	
Rope diameter	32 mm	
Line speed @ 25 t (max.)	70 m/min	
Crawler	UW 115 G	
Crawler type	B 7	
Traction force	730 kN	
Recommended Grab	Bauer DHG V	
Length	2,400 - 3,800 mm	
Width	600 - 1,800 mm	
Hydraulic cylinder	120, 180 t	
Weight	15 - 28 t	
No. of steering flaps	4, 8, 12	



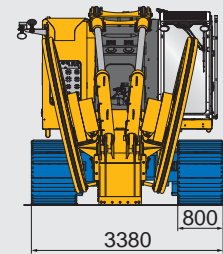
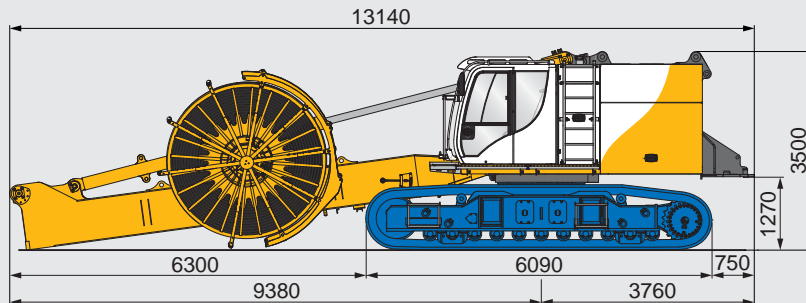
Dimensions

Total height	18,500 mm
Overall crawler length	6,093 mm
Overall crawler width	3,380 - 4,790 mm
Center line of grab to swing center	4,500 - 5,700 mm
Swing radius of rear end	3,860 mm

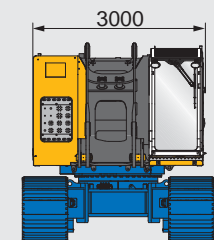
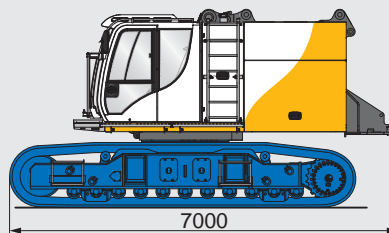
Transport Dimensions and Weights

Base Carrier

G = 59 t



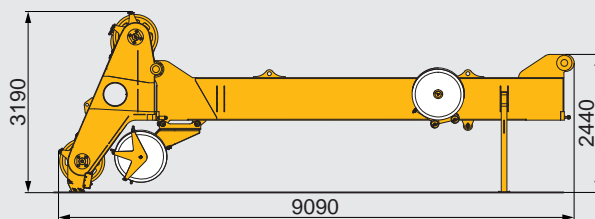
G = 50 t



G = Weight
B = Width, overall

Mast and Counterweight

G = 5.8 t B = 880 mm



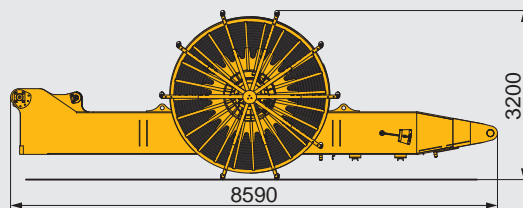
G = 0.25 t
B = 1,100 mm



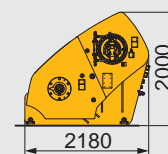
G = 6 x 4.9 t
B = 3,000 mm



G = 7.5 t B = 3,100 mm



G = 7.5 t
B = 2,240 mm



Grab System



BAUER Maschinen GmbH
BAUER-Strasse 1
86529 Schrobenhausen
Germany
Tel.: +49 8252 97-0
bma@bauer.de
www.bauer.de

Design developments and process improvements may require the specification and materials to be updated and changed without prior notice or liability. Illustrations may include optional equipment and not show all possible configurations. These and the technical data are provided as indicative information only, with any errors and misprints reserved.